



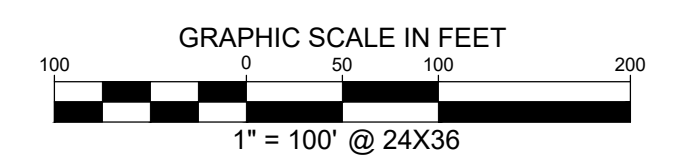
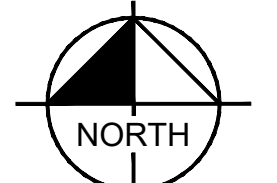
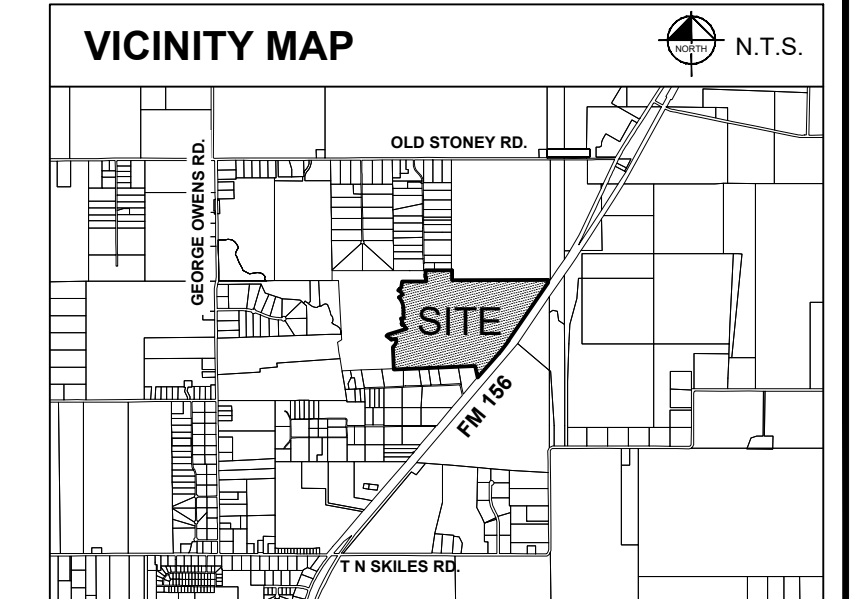
**Notice of Public Meeting**  
**Denton County Development Support Committee**  
**Morse Street Facility**  
**3900 Morse Street, 2<sup>nd</sup> Floor, Denton, TX 76208**  
**June 10, 2026**  
**9:00 A.M.**



Development Services will hold the Development Support Committee (DSC) meetings in person at 3900 Morse Street, Denton, Texas in the 2<sup>nd</sup> Floor Conference Room.

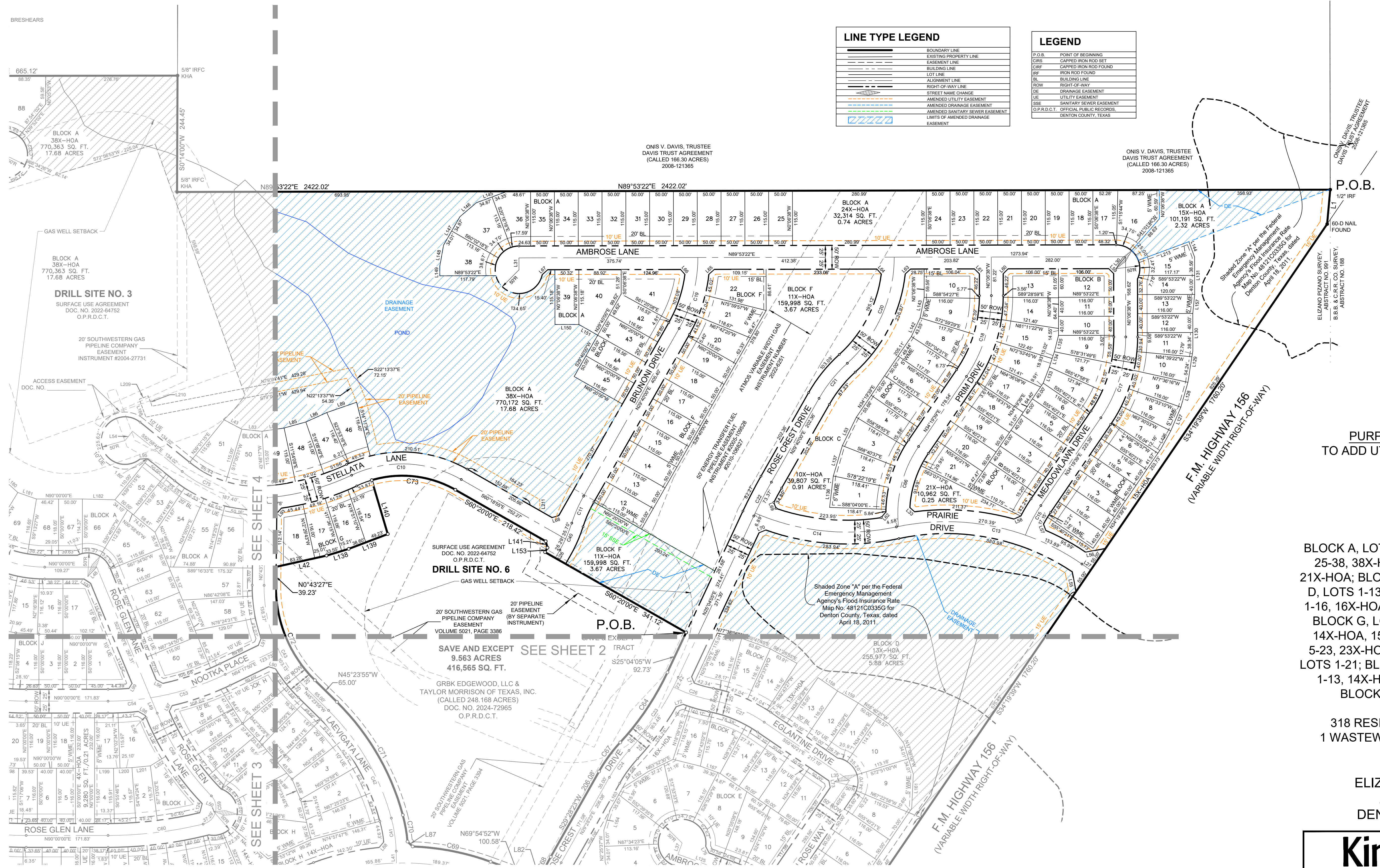
The following items may come before the Development Support Committee for discussion and/or possible action:

- I. Call to order.**
- II. Consider, discuss, approve and/or take any appropriate action on preliminary and proposed plats and/or plans:**
  - **Rosebrook Phase 1 – Amending Plat** Commissioner Precinct 4  
( 318 Residential Lots, 14 HOA & 1 Wastewater Treatment Plant Lot, 136.796 Acres)
- III. Consider, discuss, approve and/or take any appropriate action on final plats, replats and other plats:**
  - None
- IV. Consider, discuss, approve and/or take any appropriate action on variance requests:**
  - None
- V. Consider, discuss, approve and/or take any appropriate action on proposed infrastructure development plans, surveys and engineering plans:**
  - None
- VI. Adjournment**



| LINE TYPE LEGEND |                                     |
|------------------|-------------------------------------|
|                  | BOUNDARY LINE                       |
|                  | EXISTING PROPERTY LINE              |
|                  | EASEMENT LINE                       |
|                  | BUILDING LINE                       |
|                  | LOT LINE                            |
|                  | ALIGNMENT LINE                      |
|                  | RIGHT-OF-WAY LINE                   |
|                  | STREET NAME CHANGE                  |
|                  | AMENDED UTILITY EASEMENT            |
|                  | AMENDED DRAINAGE EASEMENT           |
|                  | AMENDED SANITARY SEWER EASEMENT     |
|                  | LIMITS OF AMENDED DRAINAGE EASEMENT |

| LEGEND |   |
|--------|---|
|        | P.O.B.  |
|        | POINT OF BEGINNING                            |
|        | CAPPED IRON ROD SET                           |
|        | CAPPED IRON ROD FOUND                         |
|        | IRON ROD FOUND                                |
|        | BULL DOG LINE                                 |
|        | ROW   |
|        | RIGHT-OF-WAY                                  |
|        | DE  |
|        | DRAINAGE EASEMENT                             |
|        | UE  |
|        | UTILITY EASEMENT                              |
|        | SSE   |
|        | SANITARY SEWER EASEMENT                       |
|        | O.P.R.D.C.T.                                  |
|        | OFFICIAL PUBLIC RECORDS, DENTON COUNTY, TEXAS |



**PURPOSE OF AMENDING PLAT:**  
**TO ADD UTILITY, SEWER AND DRAINAGE EASEMENTS**  
**AMENDING PLAT**  
**ROSEBROOK,**  
**PHASE 1**

BLOCK A, LOTS 1-15, 15X-HOA, 16-24, 24X-HOA, 25-38, 38X-HOA, 39-94; BLOCK B, LOTS 1-21, 21X-HOA; BLOCK C, LOTS 1-10, 10X-HOA; BLOCK D, LOTS 1-13, 13X-HOA, 14-16; BLOCK E, LOTS 1-16, 16X-HOA; BLOCK F, LOTS 12-22, 11X-HOA; BLOCK G, LOTS 15-18; BLOCK H, LOTS 1-14, 14X-HOA, 15-41; BLOCK I, LOTS 1-4, 4X-HOA, 5-23, 23X-HOA; BLOCK J, LOTS 1-17; BLOCK L, LOTS 1-21; BLOCK M, LOTS 1-13; BLOCK N, LOTS 1-13, 14X-HOA, 14-19; BLOCK O, LOTS 1-12; BLOCK P, LOT 1X, 2X-HOA-3X-HOA

318 RESIDENTIAL LOTS, 14 HOA LOTS  
 1 WASTEWATER TREATMENT PLANT LOT

136.796 ACRES  
 ELIZANO PIZANO SURVEY,  
 ABSTRACT NO. 991  
 DENTON COUNTY, TEXAS

**Kimley»Horn**

400 North Oklahoma Dr., Suite 105  
 Celina, Texas 75009  
 Tel. No. (469) 501-2200  
 www.kimley-horn.com

| Scale     | Drawn by | Checked by | Date     | Project No. | Sheet No. |
|-----------|----------|------------|----------|-------------|-----------|
| 1" = 100' | WBD      | KHA        | MAY 2026 | 064497524   | 1 OF 6    |

DEVELOPER:  
 GRBK EDGEWOOD LLC  
 5501 Headquarters Drive, Suite 300W  
 Plano, Texas 75024  
 Phone: 972-310-4545  
 Contact: Aaron Guthrie

ENGINEER:  
 Kimley-Horn and Associates, Inc.  
 400 N. Oklahoma Dr., Suite 105  
 Celina, Texas 75009  
 Phone: 469-501-2200  
 Contact: Stephanie White, P.E.

SANITARY SEWER, PAVING AND DRAINAGE PROVIDER:  
 Denton County Municipal Utility District No 11  
 c/o Winstead  
 2728 N Harwood Street  
 Dallas, TX 75201  
 214-745-5400

**NOTES:**

- All bearings shown are based on grid north of the Texas Coordinate System of 1983, North Central Zone (4202), North American Datum of 1983. All dimensions shown are ground distances. To obtain a grid distance, multiply the ground distance by the Project Combined Factor (PCF) of 0.9996493925.
- All corners are 5/8 inch iron rods with red plastic caps stamped "KHA" unless otherwise noted.
- A portion of this property lies within Shaded Zone A, areas determined to be in the 1% annual chance floodplain (100-year flood) according to FEMA Map Number 48121C0335G, dated April 18, 2011.
- Sanitary sewer to be handled by facilities approved by the Texas Commission on Environmental Quality.
- Construction not complete within two years of the Commissioners Court approval shall be subject to current County Subdivision Rules and Regulations.
- The City of Denton does not approve plats for property located in their Division 2 ETJ based on an ICA with Denton County regarding platting in the ETJ.

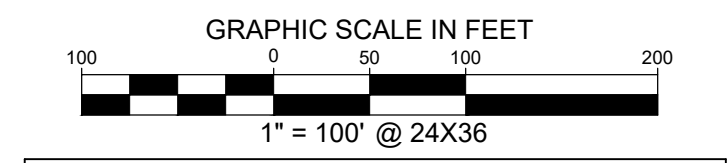
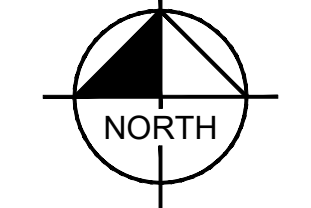
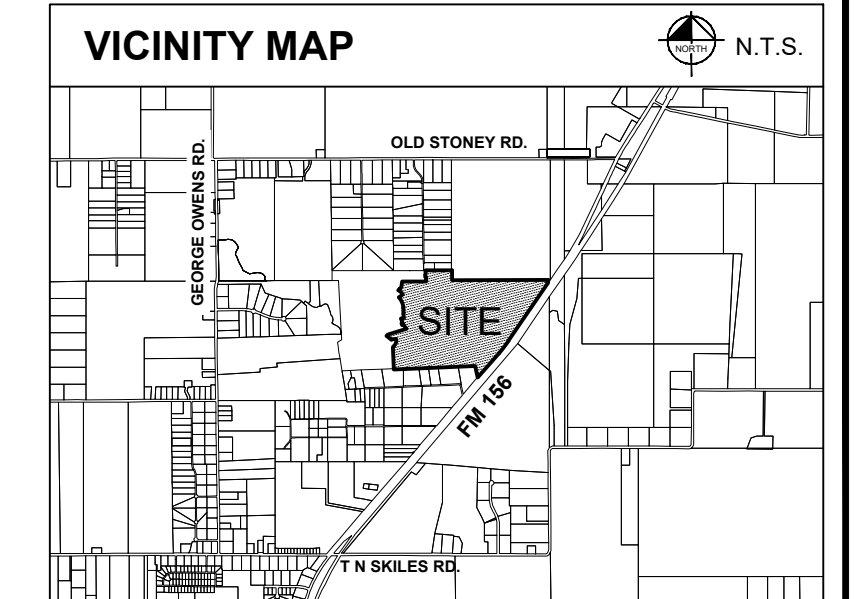
- No construction, without written approval from Denton County shall be allowed within an identified "FIRM" floodplain area, and then only after a detailed floodplain development permit including engineering plans and studies show that no rise in the Base Flood Elevation (BFE) will result, that no flooding will result, that no obstruction to the natural flow of water will result, and subject to all owners of the property affected by such construction becoming a party to the request. Where construction is permitted, all finished floor elevations shall be a minimum of two-foot above the 100-year flood.
- All surface drainage easements shall be kept clear of fences, buildings, foundations, plantings, and other obstructions to the operation and maintenance of the drainage facility.
- The maintenance of paving, grading and drainage improvements and/or easements shown on this plat are the responsibility of the individual property owners and do not constitute acceptance of same for maintenance purposes by Denton County.
- Blocking the flow of water or construction improvements in surface drainage easements, and filling or obstructing the roadway is prohibited.
- Denton County will not be responsible for any damage, personal injury or

loss of life or property occasioned by flooding or flooding conditions.

- The existing creeks or drainage channels traversing along or across the addition will remain as open channels and will be maintained by the individual property owners of the lot or lots that are traversed by or adjacent to the drainage courses along or across the lots.
- Denton County shall not be responsible for maintenance of streets, drives, emergency access easements, recreation areas and open spaces; and the owners shall be responsible for the maintenance streets, drives, emergency access easements, recreation areas and open spaces, and said owners agree to indemnify and hold harmless Denton County, from all claims, damages and losses arising out of or resulting from performance of the obligations of said owners set forth in this paragraph.
- Water service will be provided by Bolivar Water Supply Corporation.
- All public paving, sewer and drainage improvements will be owned and maintained by Denton County Municipal Utility District No. 11.

**BENCHMARKS:**

- "X" cut on a concrete headwall on the north side of the entrance of T.L. Ranch Road at Farm-to-Market Highway Number 156. (KHA #2)  
 Elevation = 698.12
- Nail set approximately 590' southwesterly of the cul-de-sac on the south end of Stoney Court. (KHA #20)  
 Elevation = 728.30



**LEGEND**

|              |   |
|--------------|---|
| P.O.B.       | POINT OF BEGINNING                            |
| CRB          | CAPPED IRON ROD SET                           |
| CRF          | CAPPED IRON ROD FOUND                         |
| IRF          | IRON ROD FOUND                                |
| BL           | BUILDING LINE                                 |
| BLW          | RIGHT-OF-WAY                                  |
| DE           | DRAINAGE EASEMENT                             |
| UE           | UTILITY EASEMENT                              |
| ESSE         | SANITARY SEWER EASEMENT                       |
| O.P.R.D.C.T. | OFFICIAL PUBLIC RECORDS, DENTON COUNTY, TEXAS |

**LINE TYPE LEGEND**

|  |                                 |
|--|---------------------------------|
|  | BOUNDARY LINE                   |
|  | EXISTING PROPERTY LINE          |
|  | EASEMENT LINE                   |
|  | BUILDING LINE                   |
|  | LOT LINE                        |
|  | ALIGNMENT LINE                  |
|  | RIGHT-OF-WAY LINE               |
|  | STREET NAME CHANGE              |
|  | AMENDED UTILITY EASEMENT        |
|  | AMENDED DRAINAGE EASEMENT       |
|  | AMENDED SANITARY SEWER EASEMENT |
|  | EASEMENT                        |

**PURPOSE OF AMENDING PLAT:  
TO ADD UTILITY, SEWER AND DRAINAGE  
EASEMENTS  
AMENDING PLAT  
ROSEBROOK,  
PHASE 1**

BLOCK A, LOTS 1-15, 15X-HOA, 16-24, 24X-HOA, 25-38, 38X-HOA, 39-94; BLOCK B, LOTS 1-21, 21X-HOA; BLOCK C, LOTS 1-10, 10X-HOA; BLOCK D, LOTS 1-13, 13X-HOA, 14-16; BLOCK E, LOTS 1-16, 16X-HOA; BLOCK F, LOTS 12-22, 11X-HOA; BLOCK G, LOTS 15-18; BLOCK H, LOTS 1-14, 14X-HOA, 15-41; BLOCK I, LOTS 1-4, 4X-HOA, 5-23, 23X-HOA; BLOCK J, LOTS 1-17; BLOCK L, LOTS 1-21; BLOCK M, LOTS 1-13; BLOCK N, LOTS 1-13, 14X-HOA, 14-19; BLOCK O, LOTS 1-12; BLOCK P, LOT 1X, 2X-HOA-3X-HOA

318 RESIDENTIAL LOTS, 14 HOA LOTS  
1 WASTEWATER TREATMENT PLANT LOT

136.796 ACRES  
ELIZANO PIZANO SURVEY,  
ABSTRACT NO. 991  
DENTON COUNTY, TEXAS

**Kimley»Horn**

400 North Oklahoma Dr., Suite 105 Celia, Texas 75009 FIRM # 10115500 Tel. No. (469) 501-2200 www.kimley-horn.com

| Scale     | Drawn by | Checked by | Date     | Project No. | Sheet No. |
|-----------|----------|------------|----------|-------------|-----------|
| 1" = 100' | WBD      | KHA        | MAY 2026 | 064497524   | 2 OF 6    |

DEVELOPER:  
GRBK EDGEWOOD LLC  
5501 Headquarters Drive, Suite 300W  
Plano, Texas 75024  
Phone: 972-310-4545  
Contact: Aaron Guthrie

ENGINEER:  
Kimley-Horn and Associates, Inc.  
400 N. Oklahoma Dr., Suite 105  
Celia, Texas 75009  
Phone: 469-501-2200  
Contact: Stephanie White, P.E.

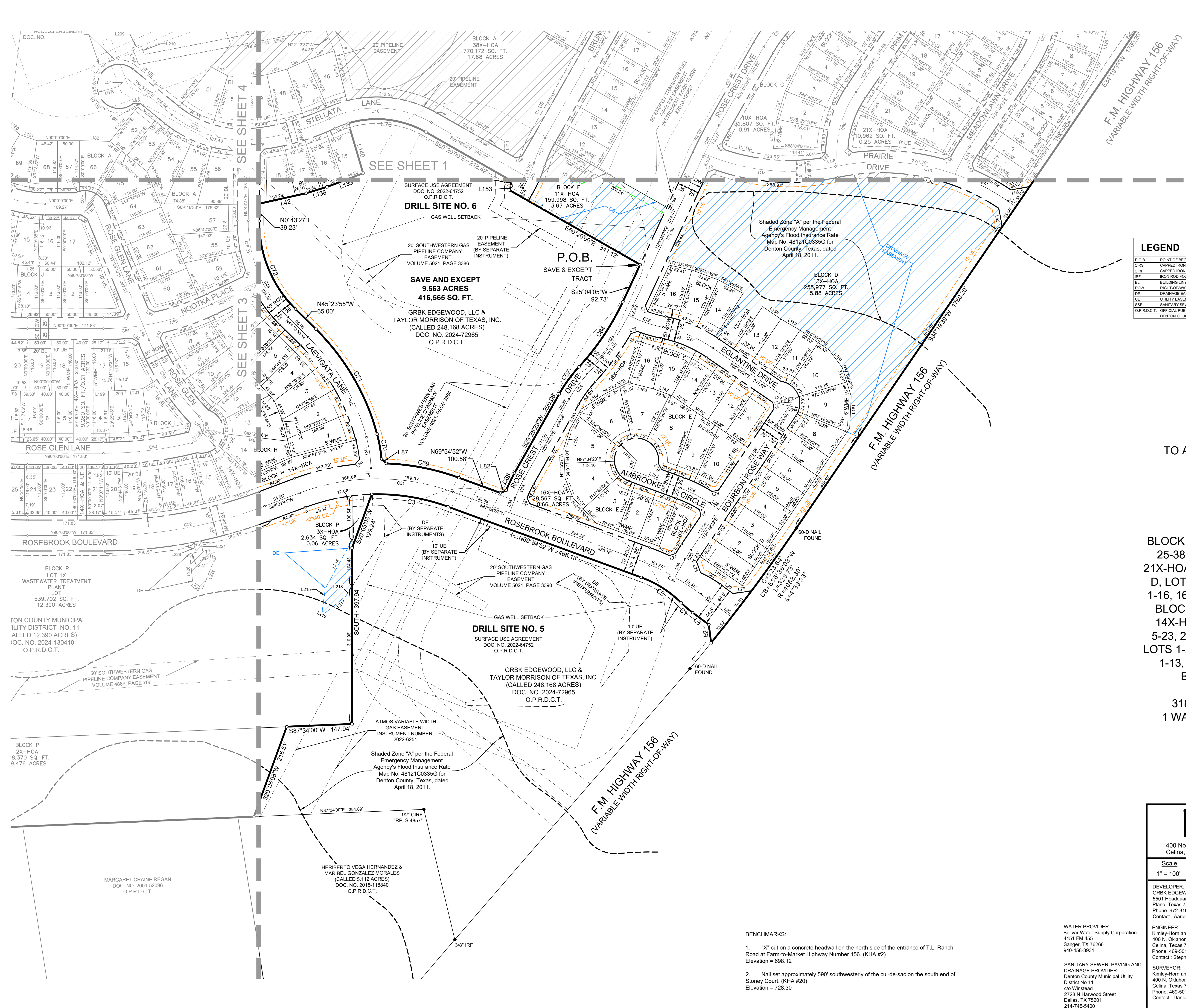
SURVEYOR:  
Kimley-Horn and Associates, Inc.  
400 N. Oklahoma Dr., Suite 105  
Celia, Texas 75009  
Phone: 469-501-2200  
Contact: Daniel Arthur, RPLS

WATER PROVIDER:  
Bolivar Water Supply Corporation  
4151 FM 455  
Sanger, TX 76266  
Phone: 469-501-2200  
Contact: Aaron Guthrie

SANITARY SEWER, PAVING AND DRAINAGE PROVIDER:  
Denton County Municipal Utility  
District No 11  
c/o Winstead  
2728 N Harwood Street  
Dallas, TX 75201  
214-745-5400

**BENCHMARKS:**

- "X" cut on a concrete headwall on the north side of the entrance of T.L. Ranch Road at Farm-to-Market Highway Number 156. (KHA #2)  
Elevation = 698.12
- Nail set approximately 590' southwesterly of the cul-de-sac on the south end of Stoney Court. (KHA #20)  
Elevation = 728.30



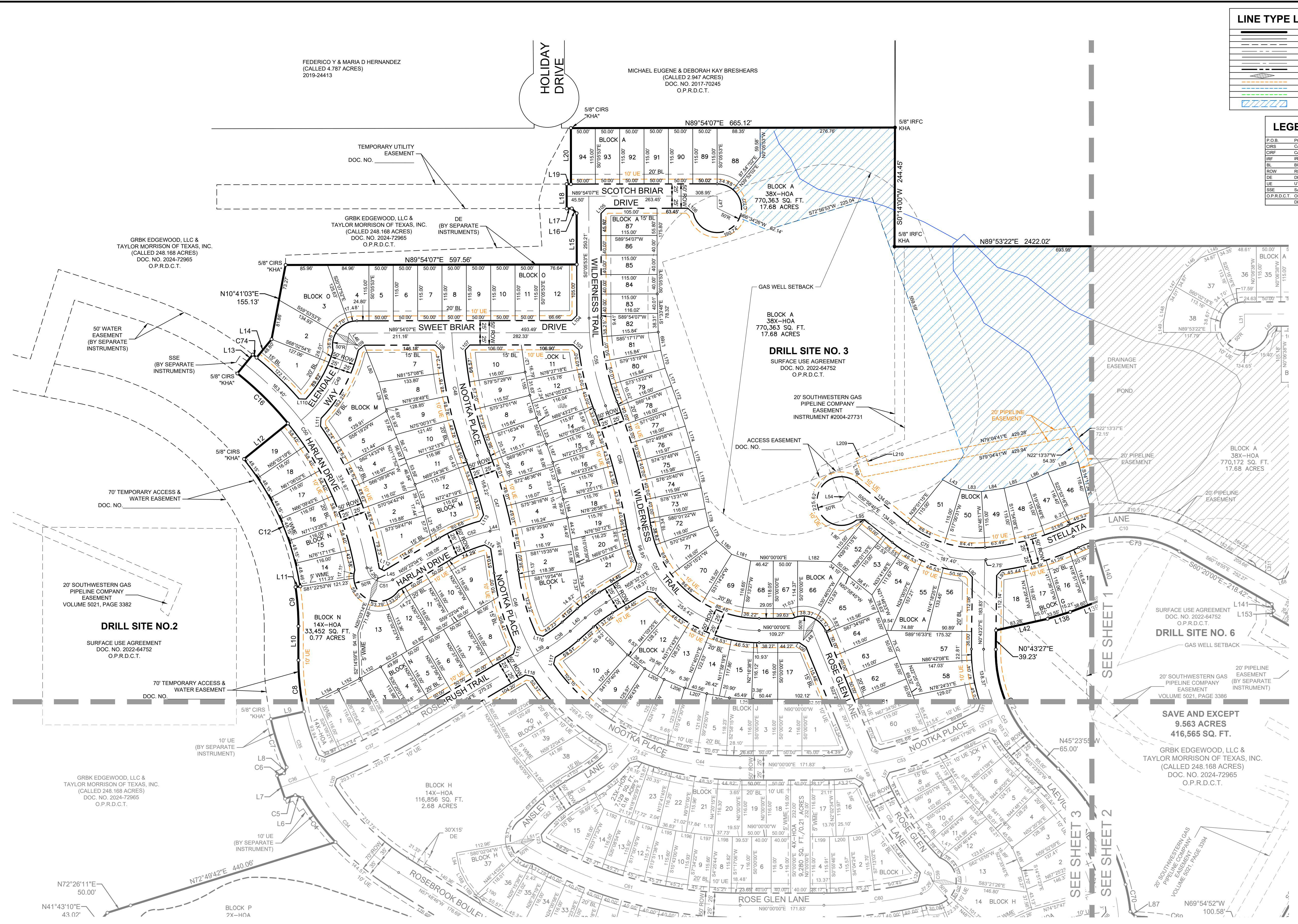
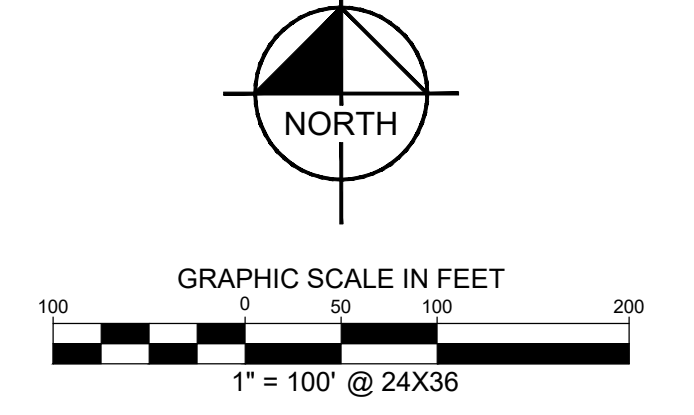
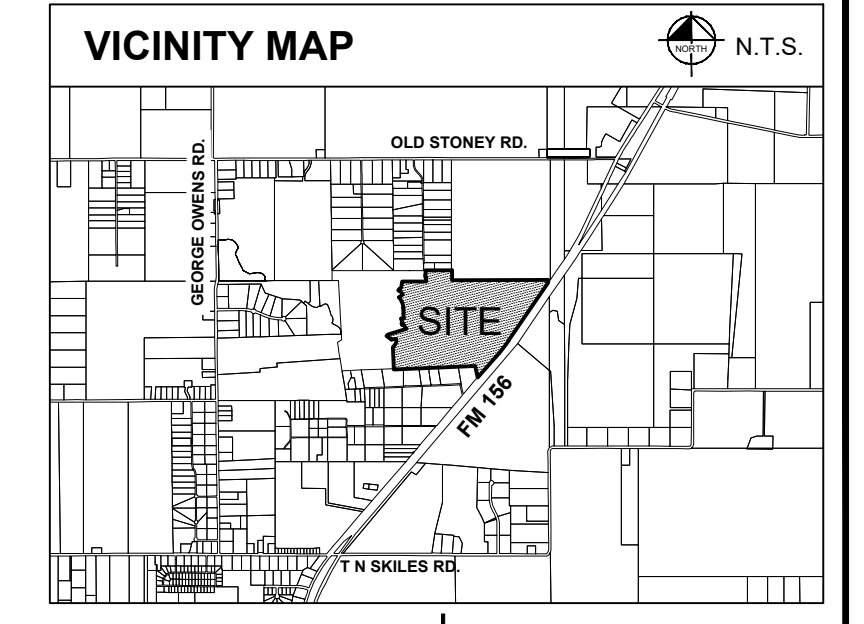


**LINE TYPE LEGEND**

|         |                                     |
|---------|-------------------------------------|
| ---     | BOUNDARY LINE                       |
| - - - - | EXISTING PROPERTY LINE              |
| ---     | EASEMENT LINE                       |
| ---     | BUILDING LINE                       |
| ---     | LOT LINE                            |
| ---     | ALIGNMENT LINE                      |
| ---     | RIGHT-OF-WAY LINE                   |
| ---     | STREET NAME CHANGE                  |
| ---     | AMENDED UTILITY EASEMENT            |
| ---     | AMENDED DRAINAGE EASEMENT           |
| ---     | AMENDED SANITARY SEWER EASEMENT     |
| ---     | LIMITS OF AMENDED DRAINAGE EASEMENT |

**LEGEND**

|              |   |
|--------------|---|
| P.O.B.       | POINT OF BEGINNING                            |
| CIRS         | CAPPED IRON ROD SET                           |
| CRIF         | CAPPED IRON ROD FOUND                         |
| IRF          | IRON ROD FOUND                                |
| BL           | BUILDING LINE                                 |
| ROW          | RIGHT-OF-WAY                                  |
| CE           | DRAINAGE EASEMENT                             |
| UE           | UTILITY EASEMENT                              |
| SSE          | SANITARY SEWER EASEMENT                       |
| O.P.R.D.C.T. | OFFICIAL PUBLIC RECORDS, DENTON COUNTY, TEXAS |



**PURPOSE OF AMENDING PLAT:  
TO ADD UTILITY, SEWER AND DRAINAGE  
EASEMENTS  
AMENDING PLAT  
ROSEBROOK,  
PHASE 1**

BLOCK A, LOTS 1-15, 15X-HOA, 16-24, 24X-HOA, 25-38, 38X-HOA, 39-94; BLOCK B, LOTS 1-21, 21X-HOA; BLOCK C, LOTS 1-10, 10X-HOA; BLOCK D, LOTS 1-13, 13X-HOA, 14-16; BLOCK E, LOTS 1-16, 16X-HOA; BLOCK F, LOTS 12-22, 11X-HOA; BLOCK G, LOTS 15-18; BLOCK H, LOTS 1-14, 14X-HOA, 15-41; BLOCK I, LOTS 1-4, 4X-HOA, 5-23, 23X-HOA; BLOCK J, LOTS 1-17; BLOCK L, LOTS 1-21; BLOCK M, LOTS 1-13; BLOCK N, LOTS 1-13, 14X-HOA, 14-19; BLOCK O, LOTS 1-12; BLOCK P, LOT 1X, 2X-HOA-3X-HOA

318 RESIDENTIAL LOTS, 14 HOA LOTS  
1 WASTEWATER TREATMENT PLANT LOT

136.796 ACRES  
ELIZANO PIZANO SURVEY,  
ABSTRACT NO. 991  
DENTON COUNTY, TEXAS

**Kimley»Horn**

400 North Oklahoma Dr., Suite 105  
Celina, Texas 75009 FIRM # 10115500 Tel. No. (469) 501-2200  
www.kimley-horn.com

| Scale     | Drawn by | Checked by | Date     | Project No. | Sheet No. |
|-----------|----------|------------|----------|-------------|-----------|
| 1" = 100' | WBD      | KHA        | MAY 2026 | 064497524   | 4 OF 6    |

DEVELOPER:  
GRBK EDGEWOOD, LLC  
5501 Headquarters Drive, Suite 300W  
Plano, Texas 75024  
Phone: 972-310-4545  
Contact: Aaron Guthrie

ENGINEER:  
Kimley-Horn and Associates, Inc.  
400 N. Oklahoma Dr., Suite 105  
Celina, Texas 75009  
Phone: 469-501-2200  
Contact: Stephanie White, P.E.

SANITARY SEWER, PAVING AND DRAINAGE PROVIDER:  
Denton County Municipal Utility  
District No 11  
c/o Winstead  
2728 N Harwood Street  
Dallas, TX 75201  
214-745-5400

WATER PROVIDER:  
Bolivar Water Supply Corporation  
4151 FM 455  
Sanger, TX 76266  
Phone: 469-501-2200  
940-458-3931

- BENCHMARKS:**
- "X" cut on a concrete headwall on the north side of the entrance of T.L. Ranch Road at Farm-to-Market Highway Number 156. (KHA #2)  
Elevation = 698.12
  - Nail set approximately 590' southwesterly of the cul-de-sac on the south end of Stony Court. (KHA #20)  
Elevation = 728.30

| LOT AREA TABLE |     |       |         |
|----------------|-----|-------|---------|
| BLOCK          | LOT | ACRES | SQ. FT. |
| A              | 1   | 0.106 | 4,639   |
| A              | 2   | 0.107 | 4,640   |
| A              | 3   | 0.107 | 4,640   |
| A              | 4   | 0.107 | 4,640   |
| A              | 5   | 0.107 | 4,640   |
| A              | 6   | 0.109 | 4,731   |
| A              | 7   | 0.125 | 5,464   |
| A              | 8   | 0.125 | 5,438   |
| A              | 9   | 0.125 | 5,438   |
| A              | 10  | 0.125 | 5,438   |
| A              | 11  | 0.122 | 5,296   |
| A              | 12  | 0.107 | 4,640   |
| A              | 13  | 0.108 | 4,720   |
| A              | 14  | 0.110 | 4,789   |
| A              | 15  | 0.139 | 6,036   |
| A              | 16  | 0.209 | 9,094   |
| A              | 17  | 0.134 | 5,854   |
| A              | 18  | 0.132 | 5,750   |
| A              | 19  | 0.132 | 5,750   |
| A              | 20  | 0.132 | 5,750   |
| A              | 21  | 0.132 | 5,750   |
| A              | 22  | 0.132 | 5,750   |
| A              | 23  | 0.132 | 5,750   |
| A              | 24  | 0.132 | 5,750   |
| A              | 25  | 0.132 | 5,750   |
| A              | 26  | 0.132 | 5,750   |
| A              | 27  | 0.132 | 5,750   |
| A              | 28  | 0.132 | 5,750   |
| A              | 29  | 0.132 | 5,750   |
| A              | 30  | 0.132 | 5,750   |
| A              | 31  | 0.132 | 5,750   |
| A              | 32  | 0.132 | 5,750   |
| A              | 33  | 0.132 | 5,750   |
| A              | 34  | 0.132 | 5,750   |
| A              | 35  | 0.132 | 5,750   |
| A              | 36  | 0.165 | 7,173   |
| A              | 37  | 0.197 | 8,574   |
| A              | 38  | 0.182 | 7,935   |
| A              | 39  | 0.133 | 5,796   |
| A              | 40  | 0.222 | 9,665   |

| LOT AREA TABLE |     |       |         |
|----------------|-----|-------|---------|
| BLOCK          | LOT | ACRES | SQ. FT. |
| A              | 41  | 0.235 | 10,249  |
| A              | 42  | 0.136 | 5,903   |
| A              | 43  | 0.134 | 5,828   |
| A              | 44  | 0.134 | 5,828   |
| A              | 45  | 0.134 | 5,828   |
| A              | 46  | 0.149 | 6,501   |
| A              | 47  | 0.141 | 6,163   |
| A              | 48  | 0.145 | 6,320   |
| A              | 49  | 0.147 | 6,386   |
| A              | 50  | 0.169 | 7,367   |
| A              | 51  | 0.171 | 7,457   |
| A              | 52  | 0.126 | 5,500   |
| A              | 53  | 0.135 | 5,871   |
| A              | 54  | 0.184 | 8,020   |
| A              | 55  | 0.194 | 8,467   |
| A              | 56  | 0.216 | 9,415   |
| A              | 57  | 0.238 | 10,359  |
| A              | 58  | 0.179 | 7,814   |
| A              | 59  | 0.198 | 8,634   |
| A              | 60  | 0.182 | 7,911   |
| A              | 61  | 0.132 | 5,750   |
| A              | 62  | 0.132 | 5,750   |
| A              | 63  | 0.132 | 5,750   |
| A              | 64  | 0.132 | 5,764   |
| A              | 65  | 0.191 | 8,310   |
| A              | 66  | 0.184 | 8,000   |
| A              | 67  | 0.135 | 5,881   |
| A              | 68  | 0.151 | 6,576   |
| A              | 69  | 0.172 | 7,513   |
| A              | 70  | 0.172 | 7,499   |
| A              | 71  | 0.137 | 5,985   |
| A              | 72  | 0.123 | 5,342   |
| A              | 73  | 0.111 | 4,846   |
| A              | 74  | 0.111 | 4,846   |
| A              | 75  | 0.111 | 4,846   |
| A              | 76  | 0.111 | 4,846   |
| A              | 77  | 0.111 | 4,846   |
| A              | 78  | 0.111 | 4,846   |
| A              | 79  | 0.114 | 4,966   |
| A              | 80  | 0.117 | 5,099   |

| LOT AREA TABLE |     |       |         |
|----------------|-----|-------|---------|
| BLOCK          | LOT | ACRES | SQ. FT. |
| A              | 81  | 0.117 | 5,099   |
| A              | 82  | 0.115 | 4,996   |
| A              | 83  | 0.106 | 4,620   |
| A              | 84  | 0.106 | 4,600   |
| A              | 85  | 0.106 | 4,600   |
| A              | 86  | 0.106 | 4,600   |
| A              | 87  | 0.146 | 6,367   |
| A              | 88  | 0.208 | 9,049   |
| A              | 89  | 0.132 | 5,752   |
| A              | 90  | 0.132 | 5,750   |
| A              | 91  | 0.132 | 5,750   |
| A              | 92  | 0.132 | 5,750   |
| A              | 93  | 0.132 | 5,750   |
| A              | 94  | 0.132 | 5,750   |
| LOT AREA TABLE |     |       |         |
| BLOCK          | LOT | ACRES | SQ. FT. |
| B              | 1   | 0.175 | 7,610   |
| B              | 2   | 0.107 | 4,640   |
| B              | 3   | 0.107 | 4,640   |
| B              | 4   | 0.107 | 4,640   |
| B              | 5   | 0.107 | 4,640   |
| B              | 6   | 0.107 | 4,640   |
| B              | 7   | 0.127 | 5,528   |
| B              | 8   | 0.134 | 5,818   |
| B              | 9   | 0.129 | 5,633   |
| B              | 10  | 0.107 | 4,640   |
| B              | 11  | 0.107 | 4,640   |
| B              | 12  | 0.159 | 6,910   |
| B              | 13  | 0.160 | 6,958   |
| B              | 14  | 0.150 | 6,554   |
| B              | 15  | 0.158 | 6,878   |
| B              | 16  | 0.157 | 6,846   |
| B              | 17  | 0.150 | 6,555   |
| B              | 18  | 0.134 | 5,849   |
| B              | 19  | 0.133 | 5,800   |
| B              | 20  | 0.133 | 5,800   |
| B              | 21  | 0.146 | 6,366   |

| LOT AREA TABLE |     |       |         |
|----------------|-----|-------|---------|
| BLOCK          | LOT | ACRES | SQ. FT. |
| C              | 1   | 0.152 | 6,634   |
| C              | 2   | 0.152 | 6,634   |
| C              | 3   | 0.152 | 6,634   |
| C              | 4   | 0.141 | 6,156   |
| C              | 5   | 0.135 | 5,888   |
| C              | 6   | 0.135 | 5,888   |
| C              | 7   | 0.138 | 5,992   |
| C              | 8   | 0.163 | 7,111   |
| C              | 9   | 0.162 | 7,075   |
| C              | 10  | 0.161 | 7,002   |
| LOT AREA TABLE |     |       |         |
| BLOCK          | LOT | ACRES | SQ. FT. |
| D              | 1   | 0.133 | 5,800   |
| D              | 2   | 0.133 | 5,800   |
| D              | 3   | 0.133 | 5,800   |
| D              | 4   | 0.133 | 5,800   |
| D              | 5   | 0.133 | 5,800   |
| D              | 6   | 0.133 | 5,800   |
| D              | 7   | 0.133 | 5,800   |
| D              | 8   | 0.154 | 6,730   |
| D              | 9   | 0.201 | 8,739   |
| D              | 10  | 0.195 | 8,514   |
| D              | 11  | 0.136 | 5,919   |
| D              | 12  | 0.135 | 5,892   |
| D              | 13  | 0.133 | 5,800   |
| D              | 14  | 0.147 | 6,398   |
| D              | 15  | 0.147 | 6,393   |
| D              | 16  | 0.163 | 7,091   |

| LOT AREA TABLE |     |       |         |
|----------------|-----|-------|---------|
| BLOCK          | LOT | ACRES | SQ. FT. |
| E              | 1   | 0.132 | 5,750   |
| E              | 2   | 0.132 | 5,750   |
| E              | 3   | 0.179 | 7,790   |
| E              | 4   | 0.197 | 8,560   |
| E              | 5   | 0.198 | 8,630   |
| E              | 6   | 0.203 | 8,834   |
| E              | 7   | 0.207 | 9,033   |
| E              | 8   | 0.250 | 10,904  |
| E              | 9   | 0.174 | 7,566   |
| E              | 10  | 0.201 | 8,760   |
| E              | 11  | 0.159 | 6,910   |
| E              | 12  | 0.133 | 5,800   |
| E              | 13  | 0.133 | 5,800   |
| E              | 14  | 0.143 | 6,222   |
| E              | 15  | 0.161 | 7,013   |
| E              | 16  | 0.142 | 6,175   |
| LOT AREA TABLE |     |       |         |
| BLOCK          | LOT | ACRES | SQ. FT. |
| F              | 12  | 0.132 | 5,750   |
| F              | 13  | 0.132 | 5,750   |
| F              | 14  | 0.132 | 5,750   |
| F              | 15  | 0.132 | 5,750   |
| F              | 16  | 0.132 | 5,750   |
| F              | 17  | 0.132 | 5,750   |
| F              | 18  | 0.132 | 5,750   |
| F              | 19  | 0.132 | 5,750   |
| F              | 20  | 0.146 | 6,351   |
| F              | 21  | 0.160 | 6,978   |
| F              | 22  | 0.199 | 8,669   |
| LOT AREA TABLE |     |       |         |
| BLOCK          | LOT | ACRES | SQ. FT. |
| G              | 15  | 0.139 | 6,070   |
| G              | 16  | 0.140 | 6,106   |
| G              | 17  | 0.142 | 6,198   |
| G              | 18  | 0.186 | 8,084   |

| LOT AREA TABLE |     |       |         |
|----------------|-----|-------|---------|
| BLOCK          | LOT | ACRES | SQ. FT. |
| H              | 1   | 0.180 | 7,823   |
| H              | 2   | 0.174 | 7,566   |
| H              | 3   | 0.165 | 7,169   |
| H              | 4   | 0.160 | 6,961   |
| H              | 5   | 0.146 | 6,339   |
| H              | 6   | 0.154 | 6,689   |
| H              | 7   | 0.194 | 8,441   |
| H              | 8   | 0.157 | 6,827   |
| H              | 9   | 0.122 | 5,293   |
| H              | 10  | 0.123 | 5,356   |
| H              | 11  | 0.116 | 5,044   |
| H              | 12  | 0.135 | 5,878   |
| H              | 13  | 0.215 | 9,375   |
| H              | 14  | 0.219 | 9,523   |
| H              | 15  | 0.134 | 5,842   |
| H              | 16  | 0.114 | 4,948   |
| H              | 17  | 0.114 | 4,948   |
| H              | 18  | 0.114 | 4,948   |
| H              | 19  | 0.114 | 4,948   |
| H              | 20  | 0.114 | 4,948   |
| H              | 21  | 0.107 | 4,654   |
| H              | 22  | 0.107 | 4,640   |
| H              | 23  | 0.107 | 4,640   |
| H              | 24  | 0.108 | 4,689   |
| H              | 25  | 0.114 | 4,947   |
| H              | 26  | 0.114 | 4,948   |
| H              | 27  | 0.114 | 4,948   |
| H              | 28  | 0.114 | 4,948   |
| H              | 29  | 0.114 | 4,948   |
| H              | 30  | 0.114 | 4,948   |
| H              | 31  | 0.114 | 4,948   |
| H              | 32  | 0.114 | 4,948   |
| H              | 33  | 0.114 | 4,948   |
| H              | 34  | 0.114 | 4,948   |
| H              | 35  | 0.114 | 4,947   |
| H              | 36  | 0.131 | 5,693   |
| H              | 37  | 0.168 | 7,320   |
| H              | 38  | 0.239 | 10,408  |
| H              | 39  | 0.156 | 6,815   |
| H              | 40  | 0.144 | 6,283   |

| LOT AREA TABLE |     |       |         |
|----------------|-----|-------|---------|
| BLOCK          | LOT | ACRES | SQ. FT. |
| H              | 41  | 0.160 | 6,952   |
| LOT AREA TABLE |     |       |         |
| BLOCK          | LOT | ACRES | SQ. FT. |
| I              | 1   | 0.198 | 8,620   |
| I              | 2   | 0.112 | 4,868   |
| I              | 3   | 0.112 | 4,872   |
| I              | 4   | 0.108 | 4,709   |
| I              | 5   | 0.107 | 4,640   |
| I              | 6   | 0.107 | 4,640   |
| I              | 7   | 0.109 | 4,735   |
| I              | 8   | 0.112 | 4,873   |
| I              | 9   | 0.112 | 4,875   |
| I              | 10  | 0.112 | 4,873   |
| I              | 11  | 0.112 | 4,869   |
| I              | 12  | 0.112 | 4,875   |
| I              | 13  | 0.112 | 4,881   |
| I              | 14  | 0.112 | 4,883   |
| I              | 15  | 0.216 | 9,429   |
| I              | 16  | 0.198 | 8,604   |
| I              | 17  | 0.137 | 5,957   |
| I              | 18  | 0.133 | 5,800   |
| I              | 19  | 0.133 | 5,800   |
| I              | 20  | 0.141 | 6,135   |
| I              | 21  | 0.141 | 6,159   |
| I              | 22  | 0.142 | 6,166   |
| I              | 23  | 0.142 | 6,193   |
| LOT AREA TABLE |     |       |         |
| BLOCK          | LOT | ACRES | SQ. FT. |
| J              | 1   | 0.201 | 8,774   |
| J              | 2   | 0.133 | 5,800   |
| J              | 3   | 0.133 | 5,800   |
| J              | 4   | 0.140 | 6,087   |
| J              | 5   | 0.149 | 6,497   |
| J              | 6   | 0.152 | 6,617   |
| J              | 7   | 0.157 | 6,850   |
| J              | 8   | 0.159 | 6,925   |
| J              | 9   | 0.160 | 6,961   |
| J              | 10  | 0.285 | 12,398  |
| J              | 11  | 0.230 | 10,024  |
| J              | 12  | 0.168 | 7,318   |
| J              | 13  | 0.163 | 7,109   |
| J              | 14  | 0.156 | 6,784   |
| J              | 15  | 0.152 | 6,601   |
| J              | 16  | 0.137 | 5,976   |
| J              | 17  | 0.207 | 9,024   |

| LOT AREA TABLE |     |       |         |
|----------------|-----|-------|---------|
| BLOCK          | LOT | ACRES | SQ. FT. |
| L              | 1   | 0.276 | 12,037  |
| L              | 2   | 0.139 | 6,071   |
| L              | 3   | 0.138 | 6,016   |
| L              | 4   | 0.138 | 6,023   |
| L              | 5   | 0.138 | 6,023   |
| L              | 6   | 0.138 | 6,024   |
| L              | 7   | 0.138 | 6,027   |
| L              | 8   | 0.140 | 6,120   |
| L              | 9   | 0.141 | 6,129   |
| L              | 10  | 0.176 | 7,677   |
| L              | 11  | 0.163 | 7,083   |
| L              | 12  | 0.118 | 5,157   |
| L              | 13  | 0.118 | 5,157   |
| L              | 14  | 0.109 | 4,749   |
| L              | 15  | 0.110 | 4,791   |
| L              | 16  | 0.110 | 4,791   |
| L              | 17  | 0.110 | 4,791   |
| L              | 18  | 0.110 | 4,791   |
| L              | 19  | 0.113 | 4,942   |
| L              | 20  | 0.128 | 5,596   |
| L              | 21  | 0.178 | 7,771   |
| LOT AREA TABLE |     |       |         |
| BLOCK          | LOT | ACRES | SQ. FT. |
| M              | 1   | 0.195 | 8,477   |
| M              | 2   | 0.140 | 6,103   |
| M              | 3   | 0.140 | 6,118   |
| M              | 4   | 0.144 | 6,263   |
| M              | 5   | 0.152 | 6,631   |
| M              | 6   | 0.298 | 12,962  |
| M              | 7   | 0.221 | 9,646   |
| M              | 8   | 0.159 | 6,912   |
| M              | 9   | 0.151 | 6,577   |
| M              | 10  | 0.143 | 6,230   |
| M              | 11  | 0.137 | 5,972   |
| M              | 12  | 0.139 | 6,051   |
| M              | 13  | 0.174 | 7,574   |

| LOT AREA TABLE |     |       |         |
|----------------|-----|-------|---------|
| BLOCK          | LOT | ACRES | SQ. FT. |
| N              | 1   | 0.137 | 5,963   |
| N              | 2   | 0.137 | 5,963   |
| N              | 3   | 0.137 | 5,963   |
| N              | 4   | 0.134 | 5,822   |
| N              | 5   | 0.133 | 5,800   |
| N              | 6   | 0.133 | 5,800   |
| N              | 7   | 0.133 | 5,800   |
| N              | 8   | 0.177 | 7,718   |
| N              | 9   | 0.195 | 8,511   |
| N              | 10  | 0.133 | 5,800   |
| N              | 11  | 0.133 | 5,800   |
| N              | 12  | 0.144 | 6,267   |
| N              | 13  |       |         |

**PROPERTY DESCRIPTION**  
**146.359 ACRES**

**BEING** a tract of land situated in the Elizano Pizano Survey, Abstract No. 991, Denton County, Texas and being a part of a called 248.168 acre tract of land described in deed to GRBK Edgewood LLC and Taylor Morrison of Texas, Inc., as recorded in Document Number 2024-72965, Official Public Records of Denton County, Texas and being all of that called 12,390 acre tract of land described in deed to Denton County Municipal Utility District No. 11 as recorded in Document Number 2024-130410, Official Public Records of Denton County, Texas and being further described as follows:

**BEGINNING** at a 1/2 inch iron rod found at the northeast corner of said 248.168 acre tract and the southeast corner of a called 166.30 acre tract of land described in deed to Onis V. Davis, Trustee of the Davis Trust Agreement as recorded in Document Number 2008-121365, Official Public Records of Denton County, Texas;

**THENCE** South 05°11'58" West, 72.64 feet along the east line of said 248.168 acre tract to a 60D nail found in the northwest right-of-way line of Farm-to Market Highway No. 156, a variable width right-of-way;

**THENCE** along the east line of said 248.168 acre tract and along the west right-of-way line of Farm-to-Market Highway No. 156 as follows:

South 34°19'39" West, 1,760.20 feet to a 60D nail found for corner, the beginning of a non-tangent curve to the right with a radius of 4,068.30 feet, a central angle of 04°33'33", and a chord bearing and distance of South 36°36'06" West, 323.64 feet;

Along said non-tangent curve to the right, 323.73 feet to a 60D nail found for corner;

**THENCE** departing the east line of said 248.168 acre tract and said west right-of-way line and over and across said 248.168 acre tract as follows:

North 07°24'11" West, 41.62 feet to a 5/8 inch iron rod with cap stamped "KHA" set for corner;

North 63°28'36" West, 45.49 feet to a 5/8 inch iron rod with cap stamped "KHA" set for corner, the beginning of a tangent curve to the right with a radius of 234.49 feet, a central angle of 08°19'30", and a chord bearing and distance of North 49°18'52" West, 34.04 feet;

Along said tangent curve to the right, 34.07 feet to a 5/8 inch iron rod with cap stamped "KHA" set for corner, the beginning of a reverse curve to the left with a radius of 250.00 feet, a central angle of 24°45'45", and a chord bearing and distance of North 57°31'59" West, 107.21 feet;

Along said reverse curve to the left, 108.05 feet to a 5/8 inch iron rod with cap stamped "KHA" set for corner;

North 69°54'52" West, 465.13 feet to a 5/8 inch iron rod with cap stamped "KHA" set for corner, the beginning of a tangent curve to the left with a radius of 465.00 feet, a central angle of 21°42'03", and a chord bearing and distance of North 80°45'53" West, 175.07 feet;

Along said tangent curve to the left, 176.12 feet to a 5/8 inch iron rod with cap stamped "KHA" set for corner;

South 20°05'08" West, 129.24 feet to a 5/8 inch iron rod with cap stamped "KHA" set for corner in the east line of said 12.390 acre tract;

**THENCE** South, 397.94 feet long the east line of said 12.390 acre tract to a 5/8 inch iron rod with cap stamped "KHA" set at its southeast corner;

**THENCE** South 87°34'00" West, 147.94 feet along the south line of said 12.390 acre tract to a 5/8 inch iron rod with cap stamped "KHA" set for corner;

**THENCE** South 20°05'08" West, 216.51 feet to a 5/8 inch iron rod with cap stamped "KHA" set for corner in the north line of a called 5.112 acre tract of land described in deed to Heriberto Vega Hernandez & Maribel Gonzalez Morales as recorded in Document Number 2018-118840, Official Public Records of Denton County, Texas from which a 1/2 inch iron rod with cap stamped "RPLS 4857" found at an interior ell corner of said 248.168 acre tract, being the northeast corner of said 5.112 acre tract bears, North 87°34'00" West, 384.89 feet;

**THENCE** South 87°34'00" West, 1,680.77 feet along the south line of said 248.168 acre tract to a 5/8 inch iron rod with cap stamped "KHA" set for corner in the north line of a called 5.0 acre tract of land described in deed to Scott & Carrie McDaniel as recorded in Volume 5130, Page 3049, Official Public Records of Denton County, Texas;

**THENCE** over and across said 248.168 acre tract as follows:

North 02°26'00" West, 558.84 feet to a 5/8 inch iron rod with cap stamped "KHA" set for corner;

North 41°43'10" East, 100.51 feet to a 5/8 inch iron rod with cap stamped "KHA" set for corner;

North 14°39'21" East, 77.33 feet to a 5/8 inch iron rod with cap stamped "KHA" set for corner;

North 05°13'39" West, 56.91 feet to a 5/8 inch iron rod with cap stamped "KHA" set for corner;

South 84°46'21" West, 103.48 feet to a 5/8 inch iron rod with cap stamped "KHA" set for corner;

South 56°16'24" West, 20.00 feet to a 5/8 inch iron rod with cap stamped "KHA" set for corner, the beginning of a non-tangent curve to the left with a radius of 50.00 feet, a central angle of 40°23'45", and a chord bearing and distance of North 53°55'28" West, 34.53 feet;

Along said non-tangent curve to the left, 35.25 feet to a 5/8 inch iron rod with cap stamped "KHA" set for corner;

North 48°16'50" West, 120.67 feet to a 5/8 inch iron rod with cap stamped "KHA" set for corner;

North 41°43'10" East, 43.02 feet to a 5/8 inch iron rod with cap stamped "KHA" set for corner;

North 72°26'11" East, 50.00 feet to a 5/8 inch iron rod with cap stamped "KHA" set for corner;

North 72°49'42" East, 440.06 feet to a 5/8 inch iron rod with cap stamped "KHA" set for corner, the beginning of a non-tangent curve to the right with a radius of 550.00 feet, a central angle of 11°51'52", and a chord bearing and distance of North 36°49'12" West, 113.69 feet;

Along said non-tangent curve to the right, 113.69 feet to a 5/8 inch iron rod with cap stamped "KHA" set for corner;

North 70°04'09" West, 15.39 feet to a 5/8 inch iron rod with cap stamped "KHA" set for corner, the beginning of a non-tangent curve to the right with a radius of 3,178.28 feet, a central angle of 00°24'00", and a chord bearing and distance of South 70°44'57" West, 22.19 feet;

Along said non-tangent curve to the right, 22.19 feet to a 5/8 inch iron rod with cap stamped "KHA" set for corner;

North 19°07'30" West, 50.24 feet to a 5/8 inch iron rod with cap stamped "KHA" set for corner, the beginning of a non-tangent curve to the left with a radius of 232.84 feet, a central angle of 03°42'55", and a chord bearing and distance of North 71°45'10" East, 15.10 feet;

Along said non-tangent curve to the left, 15.10 feet to a 5/8 inch iron rod with cap stamped "KHA" set for corner;

North 23°12'23" East, 13.57 feet to a 5/8 inch iron rod with cap stamped "KHA" set for corner, the beginning of a non-tangent curve to the right with a radius of 480.00 feet, a central angle of 12°41'59", and a chord bearing and distance of North 06°20'57" West, 106.16 feet;

Along said non-tangent curve to the right, 106.38 feet to a 5/8 inch iron rod with cap stamped "KHA" set for corner;

North 77°18'05" East, 70.00 feet to a 5/8 inch iron rod with cap stamped "KHA" set for corner, the beginning of a non-tangent curve to the right with a radius of 480.00 feet, a central angle of 08°37'07", and a chord bearing and distance of North 04°18'33" West, 80.40 feet;

Along said tangent curve to the left, 80.48 feet to a 5/8 inch iron rod with cap stamped "KHA" set for corner;

North 70°03 feet to a 5/8 inch iron rod with cap stamped "KHA" set for corner, the beginning of a tangent curve to the left with a radius of 535.00 feet, a central angle of 08°37'07", and a chord bearing and distance of North 04°18'33" West, 80.40 feet;

Along said tangent curve to the left, 80.48 feet to a 5/8 inch iron rod with cap stamped "KHA" set for corner;

North 81°22'53" East, 10.00 feet to a 5/8 inch iron rod with cap stamped "KHA" set for corner, the beginning of a non-tangent curve to the left with a radius of 545.00 feet, a central angle of 30°24'17", and a chord bearing and distance of North 23°49'15" West, 285.83 feet;

Along said non-tangent curve to the left, 289.21 feet to a 5/8 inch iron rod with cap stamped "KHA" set for corner;

North 50°58'36" East, 116.00 feet to a 5/8 inch iron rod with cap stamped "KHA" set for corner, the beginning of a non-tangent curve to the left with a radius of 661.00 feet, a central angle of 12°40'21", and a chord bearing and distance of North 45°21'34" West, 145.90 feet;

Along said non-tangent curve to the left, 146.20 feet to a 5/8 inch iron rod with cap stamped "KHA" set for corner;

North 39°10'16" East, 50.01 feet to a 5/8 inch iron rod with cap stamped "KHA" set for corner, the beginning of a non-tangent curve to the right with a radius of 711.00 feet, a central angle of 00°48'21", and a chord bearing and distance of South 51°13'55" East, 10.00 feet;

Along said non-tangent curve to the right, 10.00 feet to a 5/8 inch iron rod with cap stamped "KHA" set for corner;

North 39°10'16" East, 48.80 feet to a 5/8 inch iron rod with cap stamped "KHA" set for corner;

North 10°41'03" East, 155.13 feet to a 5/8 inch iron rod with cap stamped "KHA" set for corner;

North 89°54'07" East, 597.56 feet to a 5/8 inch iron rod with cap stamped "KHA" set for corner;

North 00°05'53" West, 105.00 feet to a 5/8 inch iron rod with cap stamped "KHA" set for corner;

North 45°05'53" West, 14.14 feet to a 5/8 inch iron rod with cap stamped "KHA" set for corner;

South 89°54'07" West, 10.50 feet to a 5/8 inch iron rod with cap stamped "KHA" set for corner;

North 00°05'53" West, 50.00 feet to a 5/8 inch iron rod with cap stamped "KHA" set for corner;

North 89°54'07" East, 8.93 feet to a 5/8 inch iron rod with cap stamped "KHA" set for corner;

North 00°05'53" West, 115.00 feet to a 5/8 inch iron rod with cap stamped "KHA" set for corner in the north line of said 248.168 acre tract and in the south line of a called 2.947 acre tract of land described in deed to Michael Eugene & Deborah Kay Breshears as recorded in Document Number 2017-70245, Official Public Records of Denton County, Texas;

**PROPERTY DESCRIPTION**  
**146.359 ACRES - CONTINUED**

**THENCE** North 89°54'07" East, 665.12 feet along the north line of said 248.168 acre tract and along the south line of said 2.947 acre tract to a 5/8 inch iron rod with cap stamped "KHA" found at the southeast corner of said 2.947 acre tract and the common corner of said 248.168 acre tract and being in the west line of said 166.30 acre tract;

**THENCE** South 00°14'00" West, 244.45 feet along the west line of said 166.30 acre tract and the common line of said 248.168 acre tract to a 5/8 inch iron rod with cap stamped "KHA" found at the southwest corner of said 166.30 acre tract and the common interior ell corner of said 248.168 acre tract;

**THENCE** North 89°53'22" East, 2,422.02 feet along the north line of said 248.168 acre tract and the south line of said 166.30 acre tract to the **POINT OF BEGINNING** and containing 6,375,412 square feet or 146.359 acres of land.

**SAVE & EXCEPT DESCRIPTION**  
**9.563 ACRES**

**BEING** a tract of land situated in the Elizano Pizano Survey, Abstract No. 991, Denton County, Texas and being a part of that called 248.168 acre tract of land described in deed to GRBK Edgewood, LLC & Taylor Morrison of Texas, Inc., as recorded in Document Number 2024-72965, Official Public Records of Denton County, Texas and being further described as follows:

**COMMENCING** at a 1/2 inch iron rod found at the northeast corner of said 248.168 acre tract;

**THENCE** South 55°28'57" West, 1,641.70 feet to a 5/8 inch iron rod with cap stamped "KHA" set for corner, being the **POINT OF BEGINNING** of this tract of land;

**THENCE** over and across said 248.168 acre tract as follows:

South 25°04'05" West, 92.73 feet to a 5/8 inch iron rod with cap stamped "KHA" set for corner, the beginning of a tangent curve to the right with a radius of 575.00 feet, a central angle of 17°45'10", and a chord bearing and distance of South 33°56'40" West, 177.45 feet;

Along said tangent curve to the right, 178.16 feet to a 5/8 inch iron rod with cap stamped "KHA" set for corner, the beginning of a reverse curve to the left with a radius of 325.00 feet, a central angle of 13°20'52", and a chord bearing and distance of South 36°08'49" West, 75.54 feet;

Along said reverse curve to the left, 75.71 feet to a 5/8 inch iron rod with cap stamped "KHA" set for corner;

South 29°28'23" West, 208.08 feet to a 5/8 inch iron rod with cap stamped "KHA" set for corner, the beginning of a tangent curve to the left with a radius of 325.00 feet, a central angle of 07°37'28", and a chord bearing and distance of South 25°39'38" West, 43.22 feet;

Along said tangent curve to the left, 43.25 feet to a 5/8 inch iron rod with cap stamped "KHA" set for corner;

South 65°31'39" West, 14.25 feet to a 5/8 inch iron rod with cap stamped "KHA" set for corner, from which a 3/8 inch iron rod found at the southeast corner of said 248.168 acre tract bears, South 05°50'37" West, 1015.54 feet;

North 69°54'52" West, 100.58 feet to a 5/8 inch iron rod with cap stamped "KHA" set for corner, the beginning of a tangent curve to the left with a radius of 535.00 feet, a central angle of 17°57'59", and a chord bearing and distance of North 78°53'51" West, 167.07 feet;

Along said tangent curve to the left, 167.76 feet to a 5/8 inch iron rod with cap stamped "KHA" set for corner;

North 46°11'41" West, 14.83 feet to a 5/8 inch iron rod with cap stamped "KHA" set for corner, the beginning of a non-tangent curve to the left with a radius of 325.00 feet, a central angle of 09°59'01", and a chord bearing and distance of North 10°02'43" West, 56.56 feet;

Along said non-tangent curve to the left, 56.63 feet to a 5/8 inch iron rod with cap stamped "KHA" set for corner, the beginning of a compound curve to the left with a radius of 525.00 feet, a central angle of 30°21'42", and a chord bearing and distance of North 30°13'04" West, 274.96 feet;

Along said compound curve to the left, 278.20 feet to a 5/8 inch iron rod with cap stamped "KHA" set for corner;

North 45°23'55" West, 65.00 feet to a 5/8 inch iron rod with cap stamped "KHA" set for corner, the beginning of a tangent curve to the right with a radius of 275.00 feet, a central angle of 46°07'22", and a chord bearing and distance of North 22°20'14" West, 215.44 feet;

Along said tangent curve to the right, 221.37 feet to a 5/8 inch iron rod with cap stamped "KHA" set for corner;

North 00°43'27" East, 39.23 feet to a 5/8 inch iron rod with cap stamped "KHA" set for corner;

North 77°27'39" East, 108.29 feet to a 5/8 inch iron rod with cap stamped "KHA" set for corner;

North 73°11'04" East, 48.76 feet to a 5/8 inch iron rod with cap stamped "KHA" set for corner;

North 69°08'54" East, 87.83 feet to a 5/8 inch iron rod with cap stamped "KHA" set for corner;

North 16°33'20" West, 117.96 feet to a 5/8 inch iron rod with cap stamped "KHA" set for corner, the beginning of a non-tangent curve to the right with a radius of 225.00 feet, a central angle of 46°13'20", and a chord bearing and distance of South 83°26'40" East, 176.63 feet;

Along said non-tangent curve to the right, 181.51 feet to a 5/8 inch iron rod with cap stamped "KHA" set for corner;

South 60°20'00" East, 218.42 feet to a 5/8 inch iron rod with cap stamped "KHA" set for corner;

South 15°20'00" East, 14.14 feet to a 5/8 inch iron rod with cap stamped "KHA" set for corner;

South 29°40'00" West, 10.50 feet to a 5/8 inch iron rod with cap stamped "KHA" set for corner;

South 60°20'00" East, 341.12 feet to the **POINT OF BEGINNING** and containing 416,565 square feet or 9.563 acres of land.

| LINE TABLE |             | LINE TABLE |     | LINE TABLE  |        | LINE TABLE |             | LINE TABLE |      | LINE TABLE  |        |
|------------|-------------|------------|-----|-------------|--------|------------|-------------|------------|------|-------------|--------|
| NO.        | BEARING     | LENGTH     | NO. | BEARING     | LENGTH | NO.        | BEARING     | LENGTH     | NO.  | BEARING     | LENGTH |
| L1         | S05°11'58"W | 72.64      | L19 | N69°22'04"E | 32.42  | L77        | S71°54'47"W | 14.63      | L115 | N16°33'53"E | 14.66  |
| L2         | N07°24'11"W | 41.62      | L40 | N48°21'02"E | 41.03  | L78        | S19°44'31"E | 26.23      | L116 | S73°18'09"E | 13.52  |
| L3         | N53°28'36"W | 45.49      | L41 | N01°36'55"W | 24.92  | L79        | N81°45'32"E | 42.60      | L117 | N12°40'55"E | 13.74  |
| L4         | S84°46'21"W | 103.48     | L42 | N77°27'39"E | 102.29 | L80        | N21°30'00"W | 81.01      | L118 | S77°06'23"E | 14.50  |
| L5         | S66°16'24"W | 20.00      | L43 | S61°59'07"E | 48.08  | L81        | S24°23'42"E | 14.01      | L119 | S68°34'13"E | 14.37  |
| L6         | N70°04'09"W | 15.39      | L44 | N78°08'24"E | 19.53  | L82        | S65°31'39"W | 14.25      | L120 | S17°44'39"W | 13.00  |
| L7         | N19°07'30"W | 50.24      | L45 | S23°05'32"W | 7.96   | L83        | S84°05'17"E | 42.44      | L121 | N09°07'35"W | 12.62  |
| L8         | N23°12'23"E | 13.57      | L46 | N32°59'29"E | 29.77  | L84        | N81°40'56"E | 47.14      | L122 | N75°45'16"E | 16.00  |
| L9         | N77°18'05"E | 70.00      | L47 | S00°05'53"E | 25.00  | L85        | N74°28'32"E | 47.45      | L123 | S11°30'02"E | 13.21  |
| L10        | N00°00'00"E | 70.03      | L48 | N43°13'03"E | 37.44  | L86        | N65°44'39"E | 48.32      | L124 | S15°29'46"W | 19.82  |
| L11        | N81°22'53"E | 10.00      | L49 | S22°25'10"E | 14.19  | L87        | S46°17'41"E | 14.83      | L125 | S69°54'52"E | 115.27 |
| L12        | N50°58'36"E | 116.00     | L50 | S65°12'49"E | 4.19   | L88        | S40°15'39"W | 14.17      | L126 | N28°43'46"E | 42.13  |
| L13        | N39°10'16"E | 50.01      | L51 | S77°05'52"W | 28.69  | L89        | N70°57'35"E | 66.15      | L127 | N22°58'24"E | 54.24  |
| L14        | N39°10'16"E | 48.80      | L52 | N69°22'04"E | 41.03  | L90        | S73°21'01"E | 14.78      | L128 | N15°51'17"E | 54.24  |
| L15        | N00°05'53"W | 105.00     | L53 | N26°10'14"E | 66.49  | L91        | N21°56'42"E | 14.78      | L129 | N08°52'11"E | 67.03  |
| L16        | N45°05'53"W | 14.14      | L54 | N39°01'15"E | 25.00  | L92        | S43°13'45"E | 14.40      | L130 | N00°06'38"W | 78.34  |
| L17        | S89°54'07"W | 10.50      | L55 | S10°31'10"E | 42.54  | L93        | S41°47'15"W | 15.08      | L131 | N00°06'38"W | 78.56  |
| L18        | N00°05'53"W | 50.00      | L56 | N79°28'51"E | 42.31  | L94        | N14°11'27"E | 36.26      | L132 | S60°43'33"W | 49.24  |
| L19        | N89°54'07"E | 8.93       | L57 | S19°58'45"E | 13.60  | L95        | N86°55'44"E | 14.82      | L133 | N20°59'20"E | 36.07  |
| L20        | N00°05'53"W | 115.00     | L58 | N86°08'43"E | 15.29  | L96        | S62°04'21"E | 15.40      | L134 | N18°06'36"E | 33.96  |
| L21        | S14°58'39"E | 75.01      | L59 | S45°06'38"E | 14.14  | L97        | N22°25'10"E | 12.86      | L135 | N14°23'37"E | 35.51  |
| L22        | S19°05'43"E | 48.78      | L60 | S44°53'22"W | 14.14  | L98        | S59°33'51"E | 15.94      | L136 | N06°46'35"E | 66.49  |
| L23        | S20°48'32"E | 40.35      | L61 | S45°08'38"E | 14.14  | L99        | S31°10'46"W | 11.67      | L137 | N16°28'32"E | 66.49  |
| L24        | S07°52'18"E | 56.45      | L62 | S40°08'13"W | 15.22  | L100       | S56°12'35"E | 16.62      | L138 | N73°11'04"E | 48.76  |
| L25        | S86°43'02"E | 48.87      | L63 | S47°32'13"W | 14.78  | L101       | S79°35'38"E | 14.89      | L139 | N69°08'54"E | 87.83  |
| L26        | N29°40'00"E | 19.17      | L64 | S41°59'01"E | 13.35  | L102       | S16°40'01"W | 14.89      | L140 | N16°33'20"W | 117.96 |
| L27        | S55°15'20"E | 22.39      | L65 | S47°32'13"W | 14.78  | L103       | S48°21'59"E | 14.93      | L141 | S15°20'00"E | 14.14  |
| L28        | S14°45'47"E | 61.87      | L66 | S41°59'01"E | 13.35  | L104       | N44°50'22"E | 14.13      | L142 | N24°57'55"E | 43.55  |
| L29        |             |            |     |             |        |            |             |            |      |             |        |